



Pictor 10.4" Tablet PC



It is also designed to mount in armored vehicles and all terrain vehicles deployed in harsh environments.

The Pictor 10.4" Tablet PC is a rugged computer that offers the performance of a standalone desktop computer in a Tablet PC form factor. Its durability, high quality screen and compact design make the Pictor ideal for many vehicle-mounted applications.

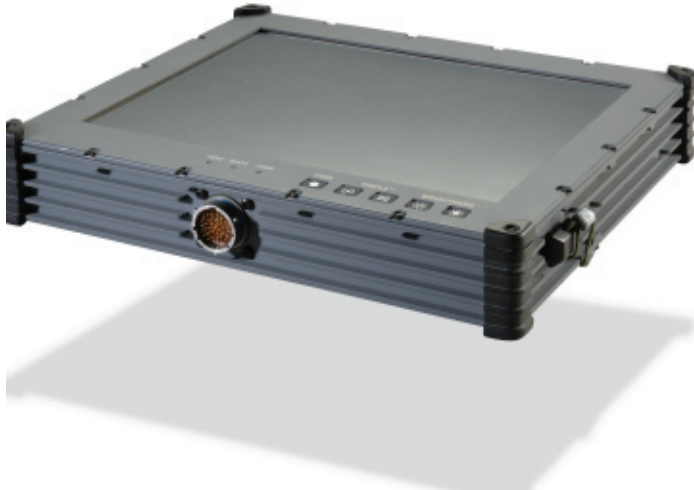
The state-of-the-art ultra low voltage Intel® Atom™ processor powers the Pictor 10.4" Tablet PC. The CPU runs at 1.6GHz and supports up to 2GB DDR SDRAM, while operating on extremely low power. The system features a video processor with up to 128MB of frame buffer via shared system memory. A 10.4" diagonal LCD with integrated touch panel provides the system human interface. The display has a resolution of 1024 x 768 pixels with up to 262K colors and is sunlight readable and dimmable to less than 1.5 nits for night vision compatibility.

The Pictor 10.4" Tablet PC uses a Solid State Drive up to 64GB for maximum performance and durability. Hardware encryption is available so that all disk content can be zeroed in less than 30 msec. The system I/O provides Power, USB Ethernet and Serial interfaces via a 37-pin Mil Circular connector. The Pictor also incorporates two PCMCIA Type II interfaces and two user accessible USB 2.0 ports. An internal GPS module is also available as an option.

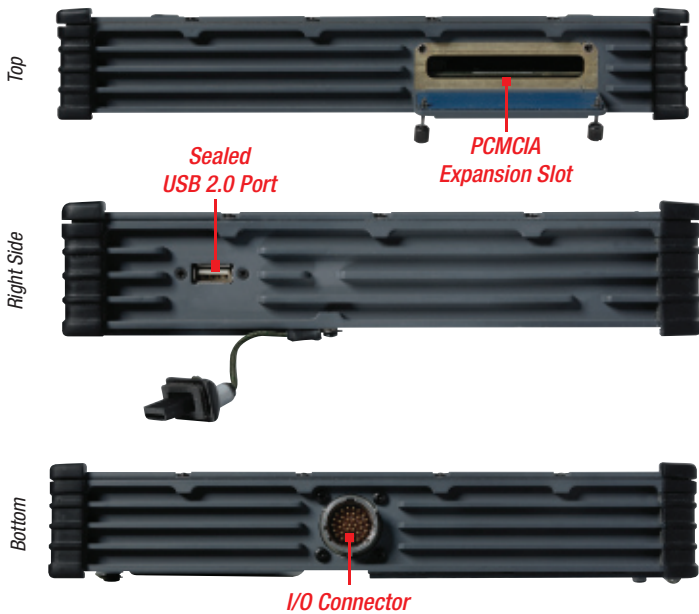
The Pictor 10.4" Tablet PC is constructed using a two-piece aluminum alloy chassis. Optional rubber shock mount bumpers are available to provide additional protection when the system is mounted in a vehicle. The system is designed to meet the environmental requirements of MIL-STD-810F.



SPECIFICATIONS



Fins along the side of the unit dissipate heat from the fanless chassis.



Users can add communication interfaces through the PCMCIA expansion slot on the top of the unit.

FEATURES

CPU	Intel Atom 1.6 Ghz Processor
Memory	2GB DDR2 (126 MB Shared video RAM)
Storage	Up to 64GB SSD
Encryption	256-bit AES Encryption with ability to instantly zeroize
OS Support	Windows XP, 7
Input Power	+28 VDC, DO-160 (optional), MIL-STD-704 (optional)
Display	10.4" AMLCD with LED Backlight, transfective 1024 x 768 resolution 450 nits, sunlight readable and dimmable to 1.5 nits for NVG compatibility Resistive Touchscreen
System I/O	USB2.0, 10/100 Base-T Ethernet, VGA Output, Serial RS422/232
Expansion	2 x PCMCIA Type II (1 x internal and 1 x external)
Options	Wireless IRD, GPS Module, ARINC 429
Battery	Li-On 200 mAh and onboard charger

PHYSICAL CHARACTERISTICS

Size	8" x 10" x 1.6"
Weight	5.4lbs with internal battery
Material / Color	Aluminum Alloy / Light Navy

ENVIRONMENTAL CONDITIONS

Operating Temp	-10°C to +50°C
Storage Temp	-30°C to +65°C
Vibration	2 GRMS 20-500Hz, 3 axes
Altitude	40,000 ft (operating)
Humidity	95% non-condensing
Shock	15G 11ms, ½ sine wave, 3 axes (operating); 30G 6ms, ½ sine wave, 3 axes (non-operating)
EMI	MIL-STD-461F (tailored)
Dust & Sand	With Screen protected

