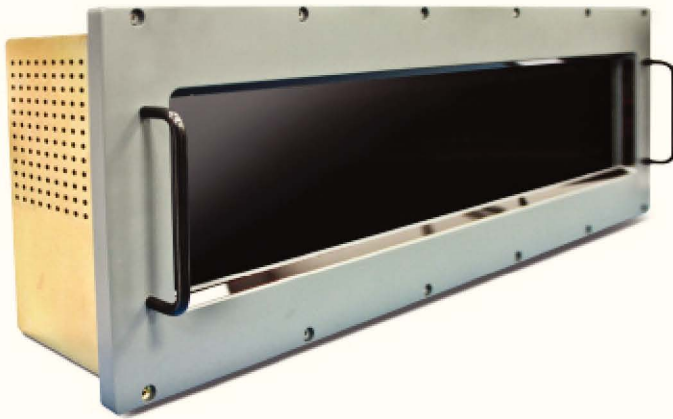




TD24 Plasma Emulating Display



The TD24 Plasma Emulating Display is a custom LCD display designed to emulate legacy plasma displays. It is a cost-effective a drop-in replacement for an obsolete plasma display that can no longer be manufactured. Both the precise color and custom interface of the old plasma display were imitated so that the replacement is transparent to the user. This customizing capability is available for other legacy display systems.

To achieve the unconventional screen size, a COTS LCD was cut down to size and sealed. This cut-glass solution maintains the form, fit, and function of the old display while reducing the cost of developing a replacement plasma solution. The TD24 also features a infra-red touchscreen interface for interacting through the custom interface.

DISPLAY

Screen Size	24 inch diagonal, 1920 x 400
Type	LCD
Contrast Ratio	700:1
Viewing Angle	±80° H/V minimum
Viewing Area	22.9" x 4.31"
Colors	16.5 million colors (Emulated plasma neon orange in current application)
Color Pixel Size	.303mm x .303mm
Brightness	Adjustable from 3.5 fL
Signal Interface	Ethernet 10/100 BaseT
Refresh Rate	60Hz
Power	115 VAC, 60-400Hz, 35 Watts
Control Interface	Infrared Touch panel

ENVIRONMENTAL CONDITIONS

Operating Temp	-25°C to +55°C
Storage Temp	-40°C to +71°C
Vibration	±2gs, 20-500Hz
Shock	10gs basic, 30gs crash safety
EMI	MIL-STD-461F (tailored)
Humidity	95% humidity, non-condensing

PHYSICAL CHARACTERISTICS

Size	26.43" x 7.43" x 3.2" (W, H, D)
Weight	15 lbs
Construction	Aluminum alloy

